

03 Male Anatomy

Next, select different colors for the structures that correspond to the following descriptions, and color in the coding circles and the corresponding structures on the figure.

- ☐ Spongy tissue that is engorged with blood during erection
- ☐ Portion of the duct system that also serves the urinary system
- ☐ Structure that provides the ideal temperature conditions for sperm formation
- ☐ Structure removed in circumcision
- ☐ Gland whose secretion contains sugar to nourish sperm
- ☐ Structure cut or cauterized during a vasectomy

★ Color or Label These

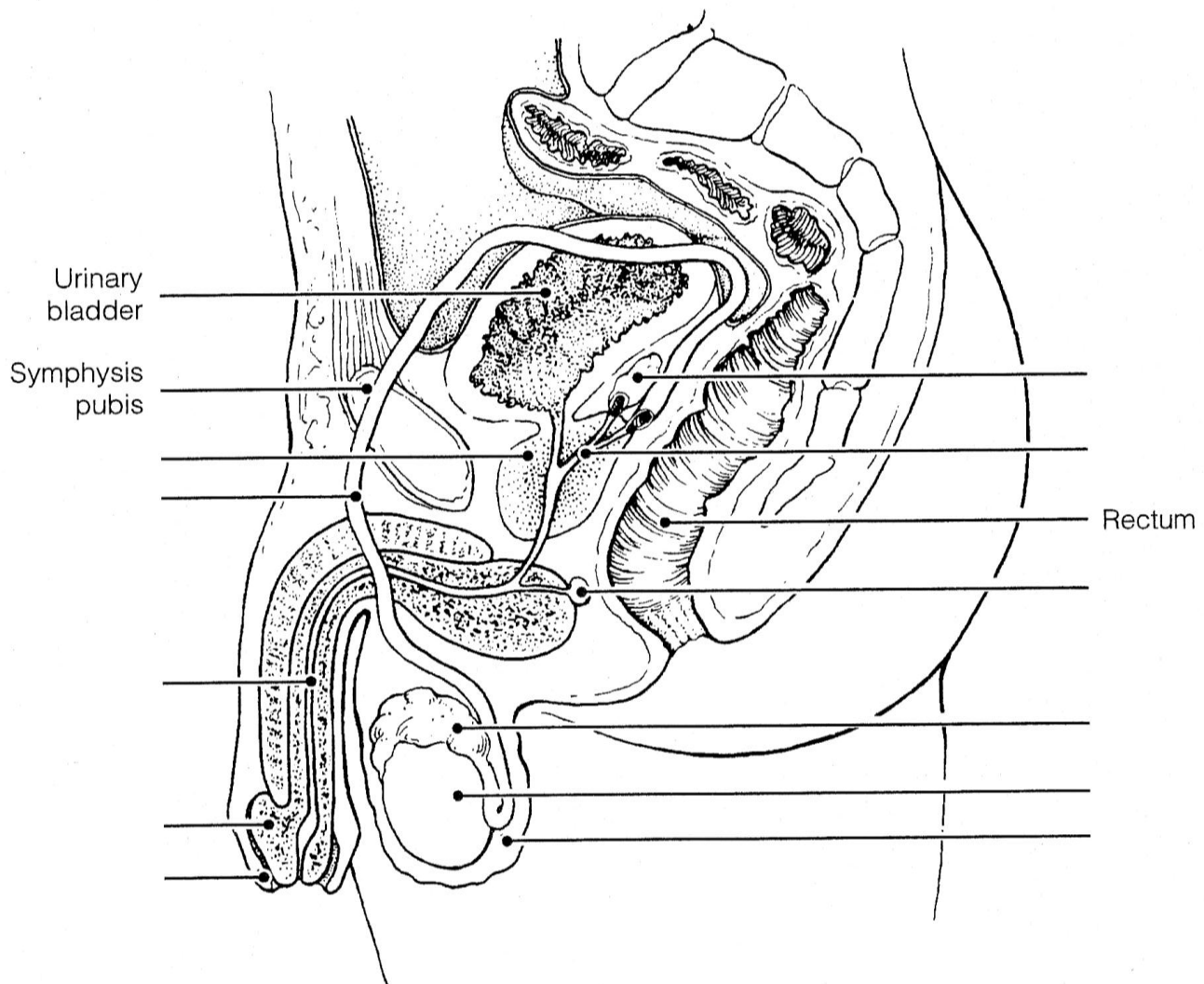


Figure 16-1